

PLEASE CHECK WWW.MOLEX.COM FOR LATEST PART INFORMATION

Part Number: [0877922120](#)
Status: **Active**
Description: 2.00mm (.079") Pitch Board-to-Board Panel Detachable PCB Header, Surface Mount, 20 Circuits, Gold (Au) Selective Plating, with Pick-and-Place Cap, Tape-and-Reel Packaging, Lead-free

Documents:

[Drawing \(PDF\)](#) [RoHS Certificate of Compliance \(PDF\)](#)
[Product Specification PS-87791-014 \(PDF\)](#)

General

Product Family	PCB Headers
Series	87792
Application	Board-to-Board
Comments	Panel Detachable
Product Name	N/A

Physical

Breakaway	No
Circuits (Loaded)	20
Circuits (maximum)	20
Durability (mating cycles max)	15,000
First Mate / Last Break	No
Glow-Wire Compliant	No
Guide to Mating Part	No
Keying to Mating Part	None
Lock to Mating Part	None
Mated Height (in)	0.309 In
Mated Height (mm)	7.85 mm
Material - Plating Mating	Gold
Material - Plating Termination	Tin
Number of Rows	2
Orientation	Vertical
PCB Locator	Yes
PCB Retention	None
PCB Thickness Recommended (in)	0.062 In
PCB Thickness Recommended (mm)	1.60 mm
Packaging Type	Embossed Tape on Reel
Pitch - Mating Interface (in)	0.079 In
Pitch - Mating Interface (mm)	2.00 mm
Polarized to Mating Part	No
Polarized to PCB	No
Robotic Placement	Pick and Place Cap
Shrouded	No
Stackable	No
Surface Mount Compatible (SMC)	N/A
Temperature Range - Operating	-25°C to +70°C
Termination Interface: Style	Surface Mount

Electrical

Current - Maximum per Contact	1A
Voltage - Maximum	125V

Material Info

Reference - Drawing Numbers

Product Specification PS-87791-014, RPS-87791-005



image - Reference only

Series

EU RoHS

**ELV and RoHS
Compliant**
REACH SVHC
 Not Reviewed
**Halogen-Free
Status**

China RoHS



**Need more information on product
environmental compliance?**

Email productcompliance@molex.com
 For a multiple part number RoHS Certificate of Compliance, [click here](#)

Please visit the [Contact Us](#) section for any non-product compliance questions.

Search Parts in this Series

[87792Series](#)

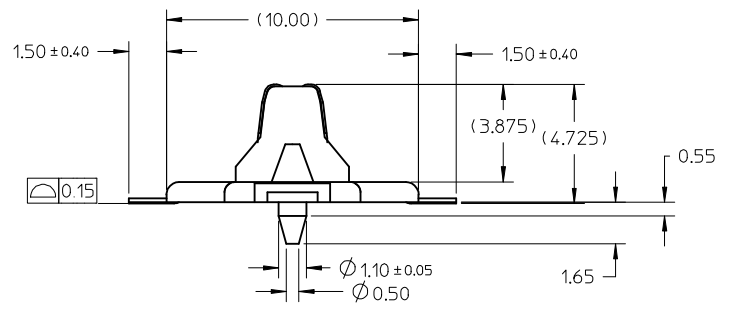
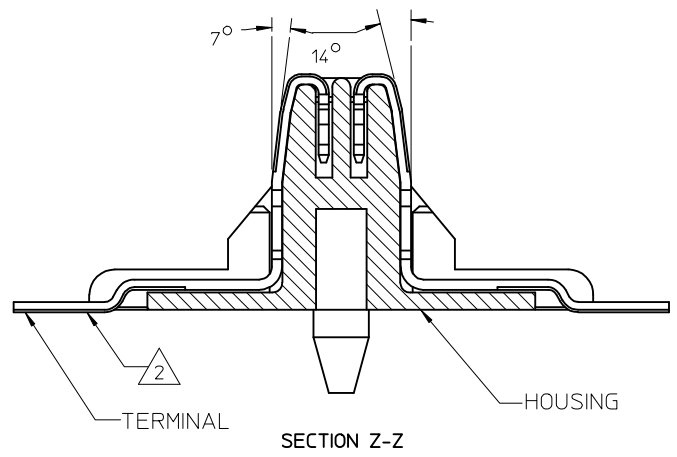
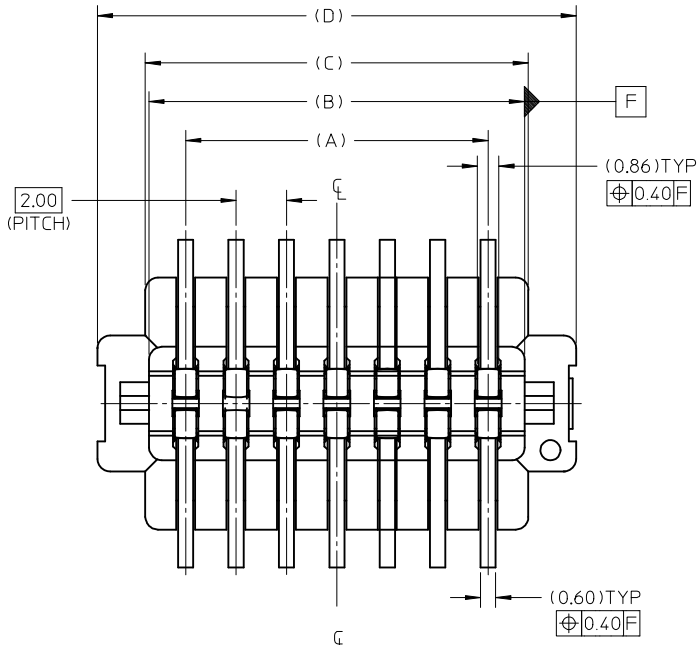
Mates With

[877910120](#) Board-to-Board Panel Detachable

This document was generated on 04/19/2010

PLEASE CHECK WWW.MOLEX.COM FOR LATEST PART INFORMATION

PLATING OPTION	ASSEMBLY P/N WITHOUT CAP IN TUBE	CKT SIZE	A	B	C	D	E
Au PLATING CONTACT AND TIN AT SOLDER TAIL	87792-0114	14	12.00	14.90	15.20	19.00	16.00
	87792-0116	16	14.00	16.90	17.20	21.00	18.00
	-	20	18.00	20.90	21.20	25.00	22.00



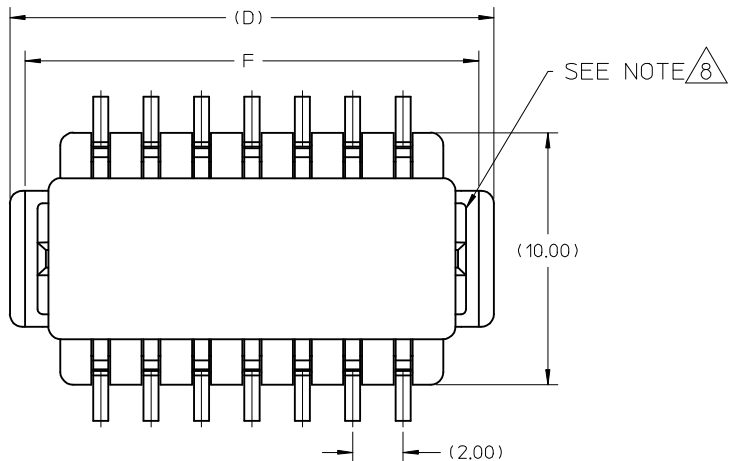
- NOTES:
- MATERIALS :
HOUSING : PA46, UL94V-0, COLOR : BLACK
CAP : PA46, UL94V-0, COLOR: BIEGE.
MAXIMUM REGRIND ALLOWABLE FOR CAP IS 100%.
TERMINAL : PHOSPHOR BRONZE.
EMBOSSD TAPE AND REEL : BLACK POLYSTYRENE CONDUCTIVE.
 - PLATING : SEE TABLE.
 - MATING PARTS REFERENCE : 87791-0*** or 87793-0***
 - REFER TO PRODUCT SPEC. PS-87791-014 FOR PERFORMANCE SPEC.
 - CONTACT AND SOLDER TAIL AREAS MUST BE FREE FROM CUTTING BURR.
 - NO SPECIFIC REQUIREMENT - OF APPEARANCE/ COSMETIC TO THE CAP.
 - CAP COVER RETENTION FORCE BEFORE RESISTANCE TO SOLDERING HEAT: 350gf MIN.
△ MAXIMUM ALLOWABLE OF FLASH AT SLOT IS 0.20MM. MAX.

UPDATE DIMENSION EC NO: S2008-0498 DRW: NAI SEE 2008/09/25 CHK: DSKANG 2008/09/26 APPR: MLONG 2008/09/26	QUALITY SYMBOLS	GENERAL TOLERANCES (UNLESS SPECIFIED)	DIMENSION STYLE	SCALE	DESIGN UNITS	THIRD ANGLE PROJECTION
	▽=0 ◻=0	mm INCH 4 PLACES ± --- ± --- 3 PLACES ± --- ± --- 2 PLACES ± 0.25 ± --- 1 PLACE ± --- ± --- ANGULAR ± 3 °	MM ONLY	NTS	METRIC	

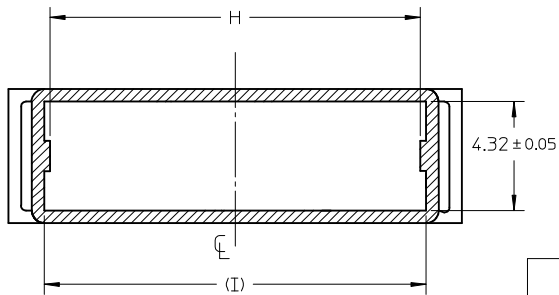
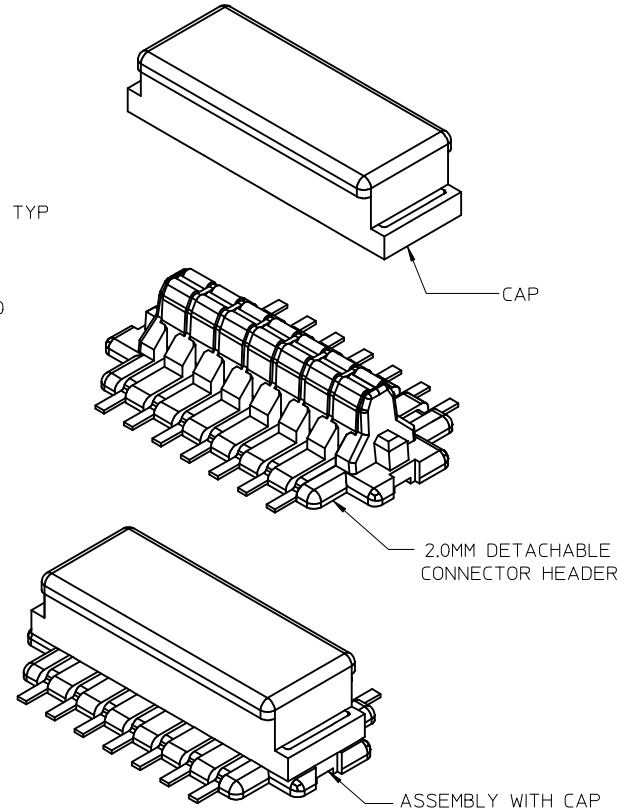
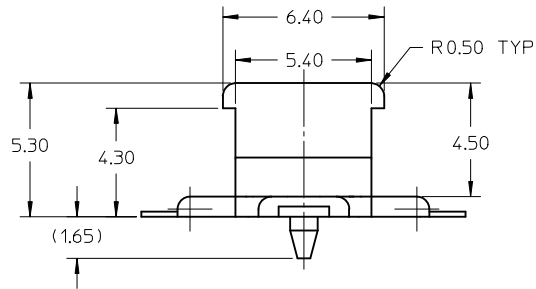
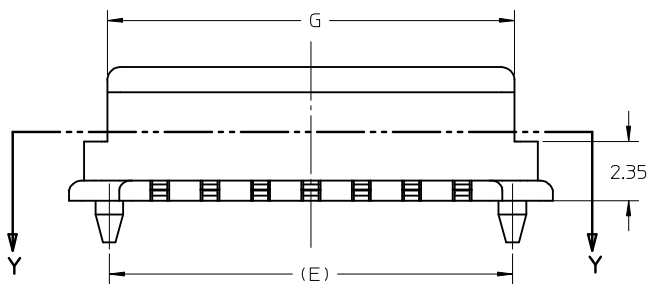
DRAWN BY CGOH	DATE 2004/08/05	TITLE 2.0 B/B CONN. PLUG SMT (PANEL DETACHABLE TYPE) IN TUBE AND T&R
	CHECKED BY PTL IM	
APPROVED BY SLOW	DATE 2004/11/01	MOLEX INCORPORATED DOCUMENT NO. SD-87792-005
MATERIAL NO.	SEE TABLE	

DRAFT WHERE APPLICABLE MUST REMAIN WITHIN DIMENSIONS		SIZE A3	THIS DRAWING CONTAINS INFORMATION THAT IS PROPRIETARY TO MOLEX INCORPORATED AND SHOULD NOT BE USED WITHOUT WRITTEN PERMISSION		
REV	DESCRIPTION	SHEET NO.	1 OF 4		

10 9 8 7 6 5 4 3 2 1



PLATING OPTION	ASSEMBLY P/N WITH CAP IN TUBE	CAP P/N	CKT	F	G	H	I
Au PLATING AT CONTACT AREA AND TIN AT SOLDER TAIL	87792-1114	87792-0003	14	18.20	16.15	14.70	15.15
	87792-1116	87792-0004	16	20.20	18.15	16.70	17.15
	87792-1120	87792-0005	20	24.20	22.15	20.70	21.15



SECTION Y-Y
(COVER ONLY)

UPDATE DIMENSION EC NO: S2008-0498 DRWNATSEE 2008/09/25 CHYKDSKANG 2008/09/26 APPR:MLONG 2008/09/26	QUALITY SYMBOLS	DESCRIPTION
	▽=0	
	∇=0	
	∇	

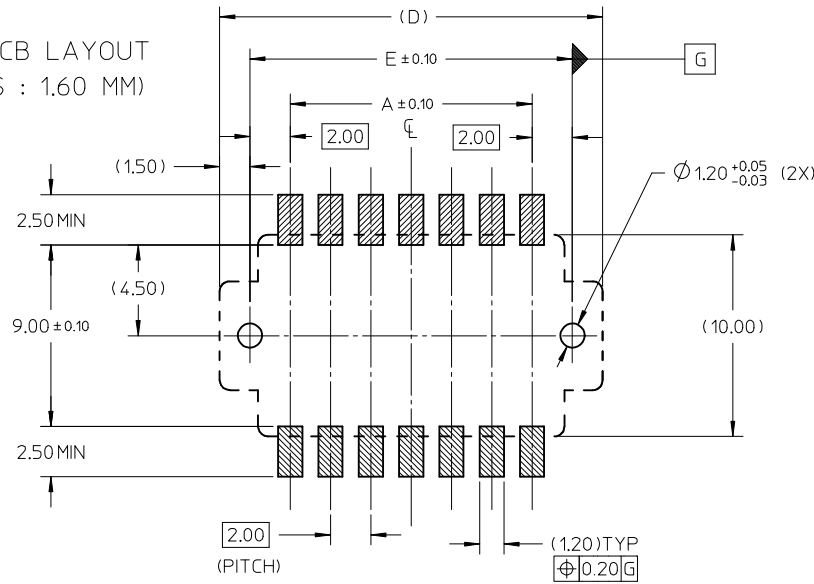
GENERAL TOLERANCES (UNLESS SPECIFIED) DRAFT WHERE APPLICABLE MUST REMAIN WITHIN DIMENSIONS	mm	INCH	
	4 PLACES	± ---	± ---
	3 PLACES	± ---	± ---
	2 PLACES	± 0.25	± ---
	1 PLACE	± ---	± ---
ANGULAR ± 3 °			

DIMENSION STYLE		SCALE	DESIGN UNITS	THIRD ANGLE PROJECTION
MM ONLY		NTS	METRIC	
DRAWN BY	DATE	TITLE		
CGOH	2004/08/05	2.0 B/B CONN. PLUG SMT (PANEL DETACHABLE TYPE) IN TUBE AND T&R		
CHECKED BY	DATE	MOLEX INCORPORATED		
PTLIM	2004/10/01	DOCUMENT NO. SD-87792-005		
APPROVED BY	DATE	SHEET NO. 2 OF 4		
SCLOW	2004/11/01	THIS DRAWING CONTAINS INFORMATION THAT IS PROPRIETARY TO MOLEX INCORPORATED AND SHOULD NOT BE USED WITHOUT WRITTEN PERMISSION		
MATERIAL NO.	SEE TABLE			
SIZE	A3			

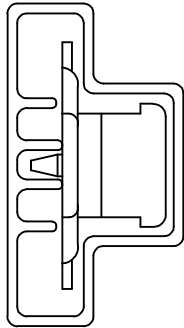
DRAWN BY		DATE	TITLE		
CGOH		2004/08/05	2.0 B/B CONN. PLUG SMT (PANEL DETACHABLE TYPE) IN TUBE AND T&R		
CHECKED BY		DATE	MOLEX INCORPORATED		
PTLIM		2004/10/01	DOCUMENT NO. SD-87792-005		
APPROVED BY		DATE	SHEET NO. 2 OF 4		
SCLOW		2004/11/01	THIS DRAWING CONTAINS INFORMATION THAT IS PROPRIETARY TO MOLEX INCORPORATED AND SHOULD NOT BE USED WITHOUT WRITTEN PERMISSION		
MATERIAL NO.		SEE TABLE			
SIZE		A3			

9 8 7 6 5 4 3 2 1

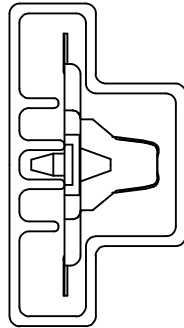
RECOMMENDED PCB LAYOUT
(PCB THICKNESS : 1.60 MM)



ASSEMBLY WITH CAP
IN TUBE



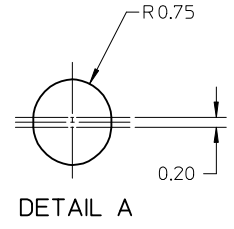
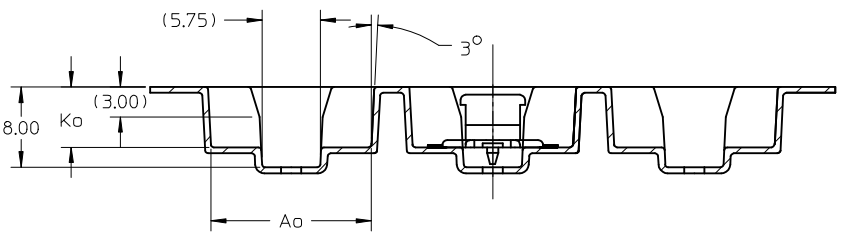
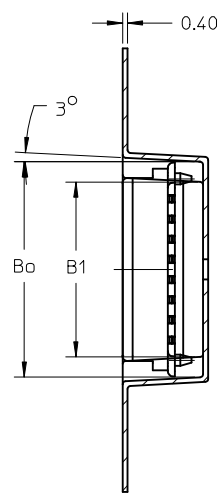
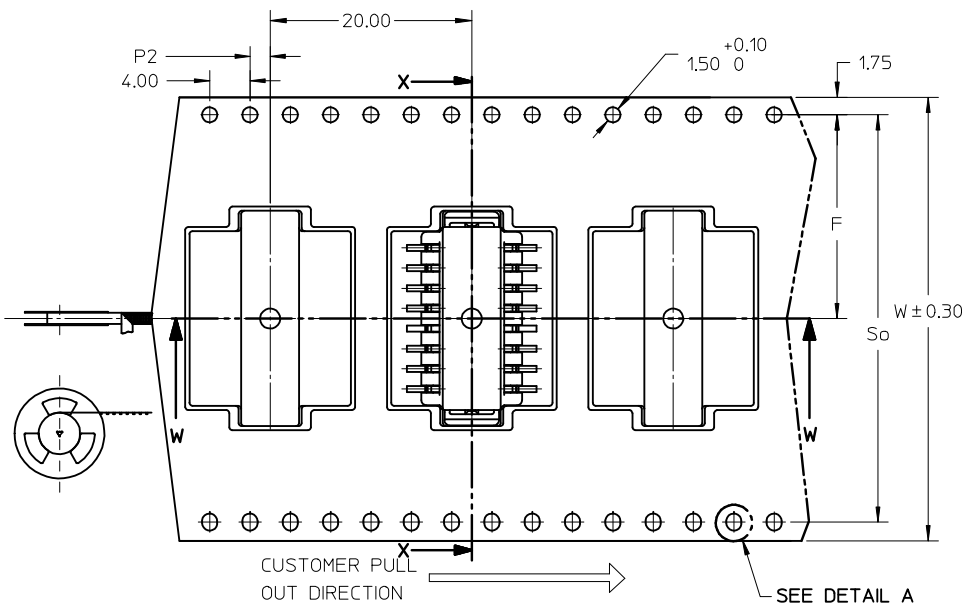
ASSEMBLY WITHOUT
CAP IN TUBE



UPDATE DIMENSION EC NO: S2008-0498 DRWN:ATSEE 2008/09/25 CHKD:SKANG 2008/09/26 APPR:MLONG 2008/09/26	QUALITY SYMBOLS ▽=0 ◻=0	GENERAL TOLERANCES (UNLESS SPECIFIED)		DIMENSION STYLE MM ONLY		SCALE NTS	DESIGN UNITS METRIC	THIRD ANGLE PROJECTION		
			mm	INCH	DRAWN BY	DATE	TITLE			
		4 PLACES	± ---	± ---	CGOH	2004/08/05	2.0 B/B CONN. PLUG SMT (PANEL DETACHABLE TYPE) IN TUBE AND T&R			
		3 PLACES	± ---	± ---	CHECKED BY	DATE				
2 PLACES	± 0.25	± ---	PTL IM	2004/10/01	MOLEX INCORPORATED					
1 PLACE	± ---	± ---	APPROVED BY	DATE						
ANGULAR ± 3 °		DRAFT WHERE APPLICABLE MUST REMAIN WITHIN DIMENSIONS		MATERIAL NO.		DOCUMENT NO.		SHEET NO.		
				SEE TABLE		SD-87792-005		3 OF 4		
				THIS DRAWING CONTAINS INFORMATION THAT IS PROPRIETARY TO MOLEX INCORPORATED AND SHOULD NOT BE USED WITHOUT WRITTEN PERMISSION						

TAPE AND REEL DETAIL

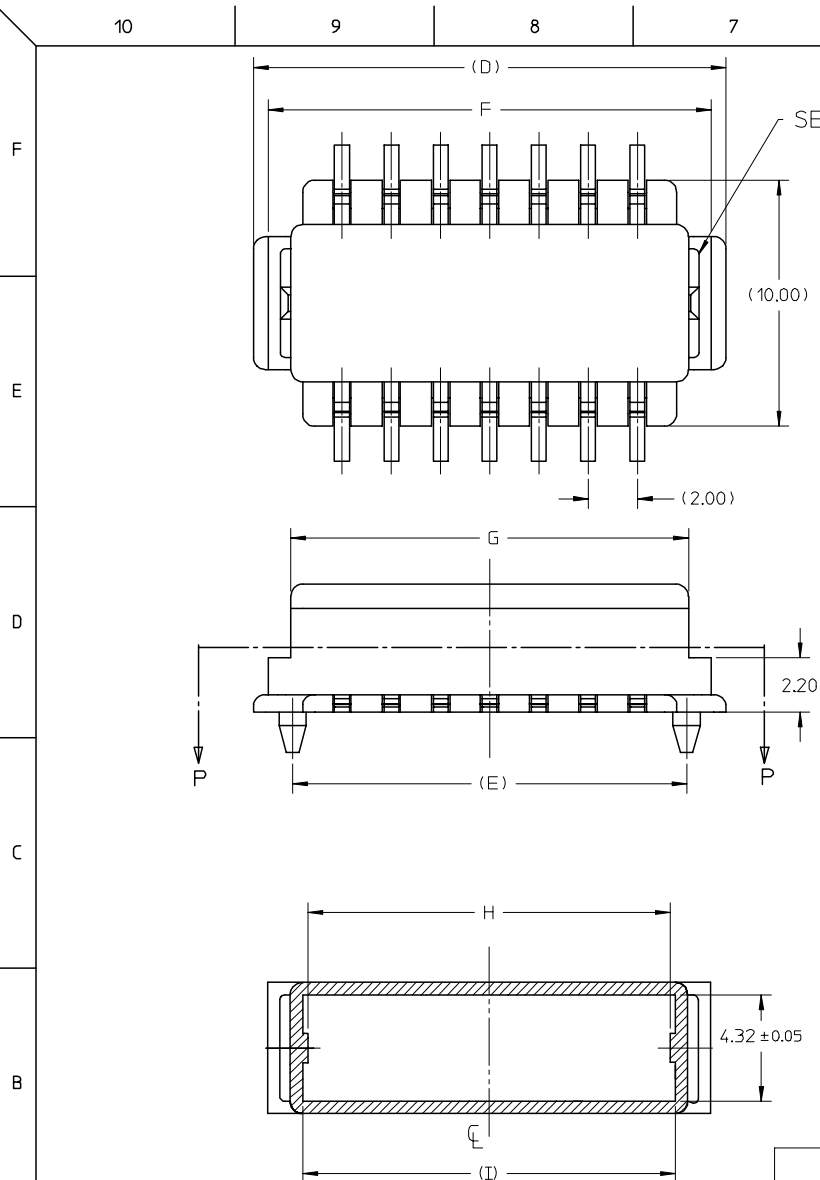
PLATING OPTION	ASSEMBLY P/N WITH CAP IN TAPE & REEL	CKT SIZE	F	Bo	B1	So	W	Ao	Ko	P2
Au PLATING AT CONTACT AREA AND TIN AT SOLDDERTAIL	87792-2116	16	20.20	21.35	17.35	40.40	44.00	15.90	6.00	2.00
	87792-2120	20		25.35	21.35					



NOTES:

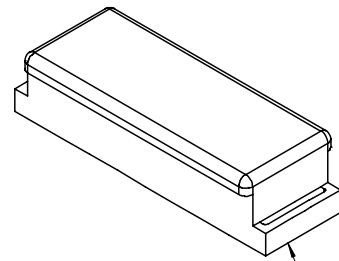
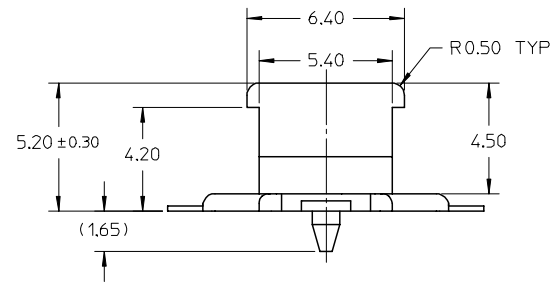
- LEADER AND TRAILER TAPE
- PEELING OFF FORCE OF THE TOP TAPE: 20 - 80gf. (PEELING DIRECTION AS SHOWN IN FOLLOWING FIGURE)
- TAPE AND REEL SPECIFICATION IS AS PER EIA-481.
- TAPE AND REEL QUANTITY : 520 PCS/ REEL
- THE TAPE IS TREATED FOR ANTI-STATIC.

UPATE DIMENSION EC NO: S2008-0498 DRWN:ATSEE 2008/09/25 CHKD:SKANG 2008/09/26 APPR:MLONG 2008/09/26	QUALITY SYMBOLS	GENERAL TOLERANCES (UNLESS SPECIFIED)	DIMENSION STYLE	SCALE	DESIGN UNITS	THIRD ANGLE PROJECTION
	▼=0 □=0	mm INCH 4 PLACES ± --- ± --- 3 PLACES ± --- ± --- 2 PLACES ± 0.25 ± --- 1 PLACE ± --- ± --- ANGULAR ± 3°	MM ONLY	NTS	METRIC	☉ □ THIRD ANGLE PROJECTION
	DESCRIPTION	DRAFT WHERE APPLICABLE MUST REMAIN WITHIN DIMENSIONS	DRAWN BY CGOH DATE 2004/08/05 CHECKED BY PTLIM DATE 2004/10/01 APPROVED BY SCLW DATE 2004/11/01	TITLE	2.0 B/B CONN. PLUG SMT (PANEL DETACHABLE TYPE) IN TUBE AND T&R	
	REV		MATERIAL NO.	SEE TABLE	DOCUMENT NO.	MOLEX INCORPORATED SD-87792-005

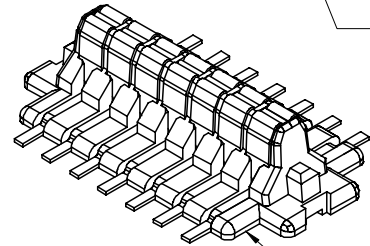


SEE NOTE 8

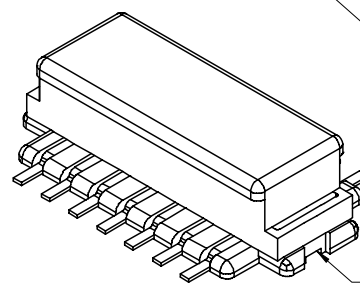
PLATING OPTION	ASSEMBLY P/N WITH CAP IN TUBE	CAP P/N	CKT	F	G	H	I
Au PLATING AT CONTACT AREA AND TIN/LEAD AT SOLDER TAIL	87792-1014	87792-0003	14	18.20	16.15	14.70	15.15
	87792-1016	87792-0004	16	20.20	18.15	16.70	17.15
Au PLATING AT CONTACT AREA AND TIN AT SOLDER TAIL	87792-1114	87792-0003	14	18.20	16.15	14.70	15.15
	87792-1116	87792-0004	16	20.20	18.15	16.70	17.15
	87792-1120	87792-0005	20	24.20	22.15	20.70	21.15



CAP



2.0MM DETACHABLE CONNECTOR HEADER



ASSEMBLY WITH CAP

SECTION P-P
(COVER ONLY)

REVISED PER
EC NO: S2006-0838
DRWN:CGOH
CHKD:NAGESHK
APPR:PTLIM

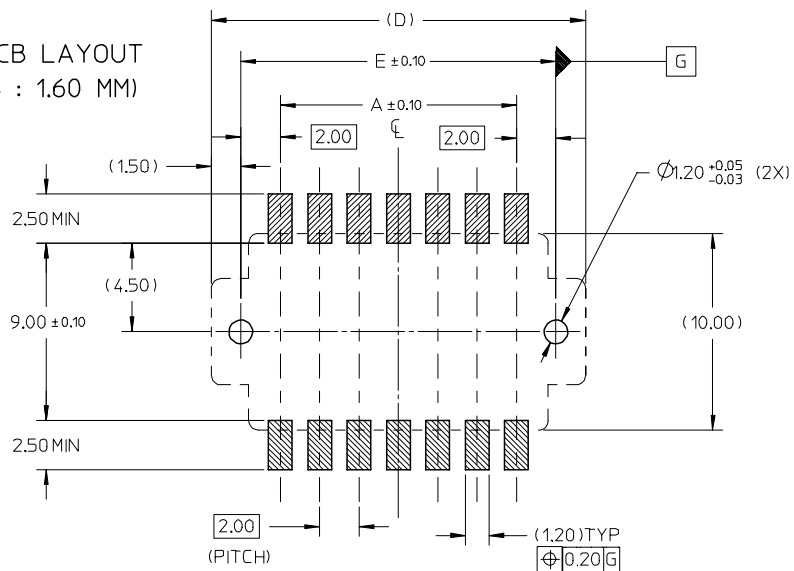
QUALITY SYMBOLS
▽=0
∇=0

	GENERAL TOLERANCES (UNLESS SPECIFIED)	
	mm	INCH
4 PLACES	± .05	± .002
3 PLACES	± .03	± .001
2 PLACES	± 0.25	± .010
1 PLACE	± .10	± .004
ANGULAR ± 3°		

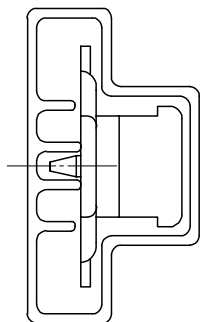
DIMENSION STYLE	
SCALE	DESIGN UNITS
MM ONLY	METRIC
DRAWN BY CGOH	DATE 2004/08/05
CHECKED BY PTLIM	DATE 2004/10/01
APPROVED BY SCLOW	DATE 2004/11/01
MATERIAL NO.	DOCUMENT NO.
SEE TABLE	SD-87792-005

THIRD ANGLE PROJECTION	
TITLE 2.0 B/B CONN. PLUG SMT (PANEL DETACHABLE TYPE) IN TUBE AND T&R	
MOLEX INCORPORATED	
MATERIAL NO.	SHEET NO.
SEE TABLE	2 OF 4
THIS DRAWING CONTAINS INFORMATION THAT IS PROPRIETARY TO MOLEX INCORPORATED AND SHOULD NOT BE USED WITHOUT WRITTEN PERMISSION	

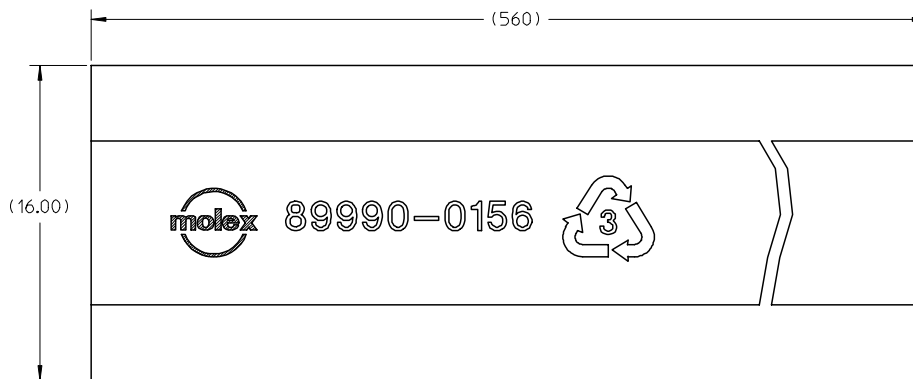
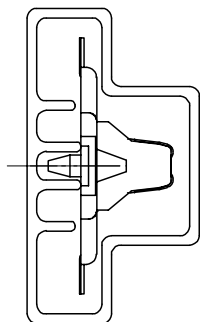
RECOMMENDED PCB LAYOUT
(PCB THICKNESS : 1.60 MM)



ASSEMBLY WITH CAP
IN TUBE



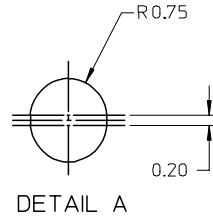
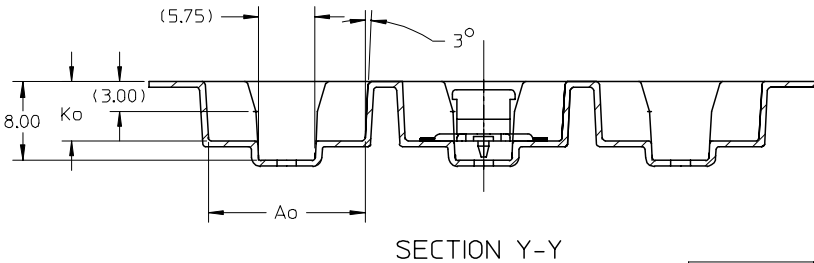
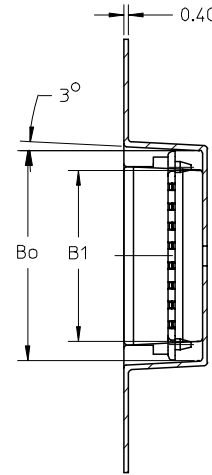
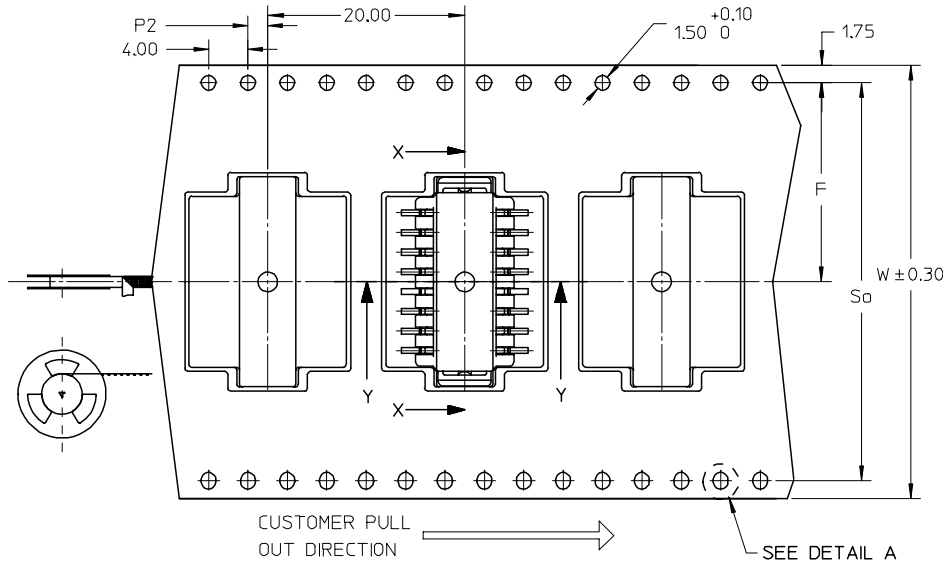
ASSEMBLY WITHOUT
CAP IN TUBE



REVISED PER EC NO: S2006-0838 DRWN:CGOH CHKD:NAGESHKN APPR:PTLIM 2006/07/12 2006/07/12 2006/07/12	QUALITY SYMBOLS	GENERAL TOLERANCES (UNLESS SPECIFIED)	DIMENSION STYLE	SCALE	DESIGN UNITS	THIRD ANGLE PROJECTION	
	$\nabla = 0$ $\nabla C = 0$	mm INCH 4 PLACES ± --- ± --- 3 PLACES ± --- ± --- 2 PLACES ± 0.25 ± --- 1 PLACE ± --- ± --- ANGULAR ± 3 °	MM ONLY	NTS	METRIC		
	DESCRIPTION	DRAFT WHERE APPLICABLE MUST REMAIN WITHIN DIMENSIONS	DRAWN BY	DATE	TITLE		
	REV		CGOH	2004/08/05	2.0 B/B CONN. PLUG SMT (PANEL DETACHABLE TYPE) IN TUBE AND T&R		
			PTLIM	2004/10/01			
			APPROVED BY	DATE			
			SCLOW	2004/11/01			
			MATERIAL NO.	DOCUMENT NO.			
			SEE TABLE	SD-87792-005			
			SIZE				
			A3				
			THIS DRAWING CONTAINS INFORMATION THAT IS PROPRIETARY TO MOLEX INCORPORATED AND SHOULD NOT BE USED WITHOUT WRITTEN PERMISSION				
						SHEET NO. 3 OF 4	

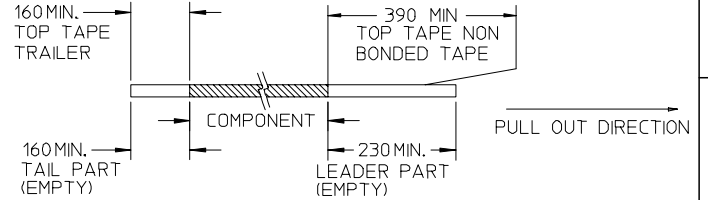
TAPE AND REEL DETAIL

PLATING OPTION	ASSEMBLY P/N WITH CAP IN TAPE & REEL	CKT SIZE	F	Bo	B1	So	W	Ao	Ko	P2
Au PLATING AT CONTACT AREA AND TIN/LEAD AT SOLDER TAIL	87792-2016	16	20.20	21.35	17.35	40.40	44.00	15.90	6.00	2.00
Au PLATING AT CONTACT AREA AND TIN AT SOLDER TAIL	87792-2116									
	87792-2120	20		25.35	21.35					

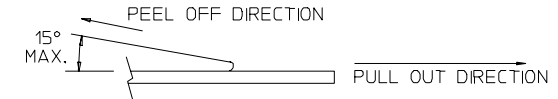


NOTES:

1. LEADER AND TRAILER TAPE



2. PEELING OFF FORCE OF THE TOP TAPE: 20 - 80gf. (PEELING DIRECTION AS SHOWN IN FOLLOWING FIGURE)



3. TAPE AND REEL SPECIFICATION IS AS PER EIA-481.

4. TAPE AND REEL QUANTITY : 520 PCS/ REEL

5. THE TAPE IS TREATED FOR ANTI-STATIC.

REVISED PER EC NO: S2006-0838 DRWN: CGOH CHKD: NAGESHKN APPR: PTLIM 2006/07/12 2006/07/12 2006/07/12	QUALITY SYMBOLS	GENERAL TOLERANCES (UNLESS SPECIFIED)	DIMENSION STYLE	SCALE	DESIGN UNITS	THIRD ANGLE PROJECTION
	▽=0 ▽=0	mm INCH 4 PLACES ± --- ± --- 3 PLACES ± --- ± --- 2 PLACES ± 0.25 ± --- 1 PLACE ± --- ± --- ANGULAR ± 3°	MM ONLY	NTS	METRIC	DRAWN BY DATE CGOH 2004/08/05 CHECKED BY DATE PTLIM 2004/10/01 APPROVED BY DATE SCLOW 2004/11/01
	DESCRIPTION	DRAFT WHERE APPLICABLE MUST REMAIN WITHIN DIMENSIONS	MATERIAL NO.	DOCUMENT NO.	TITLE	
	B5	SEE TABLE	SD-87792-005	2.0 B/B CONN. PLUG SMT (PANEL DETACHABLE TYPE) IN TUBE AND T&R		MOLEX INCORPORATED